

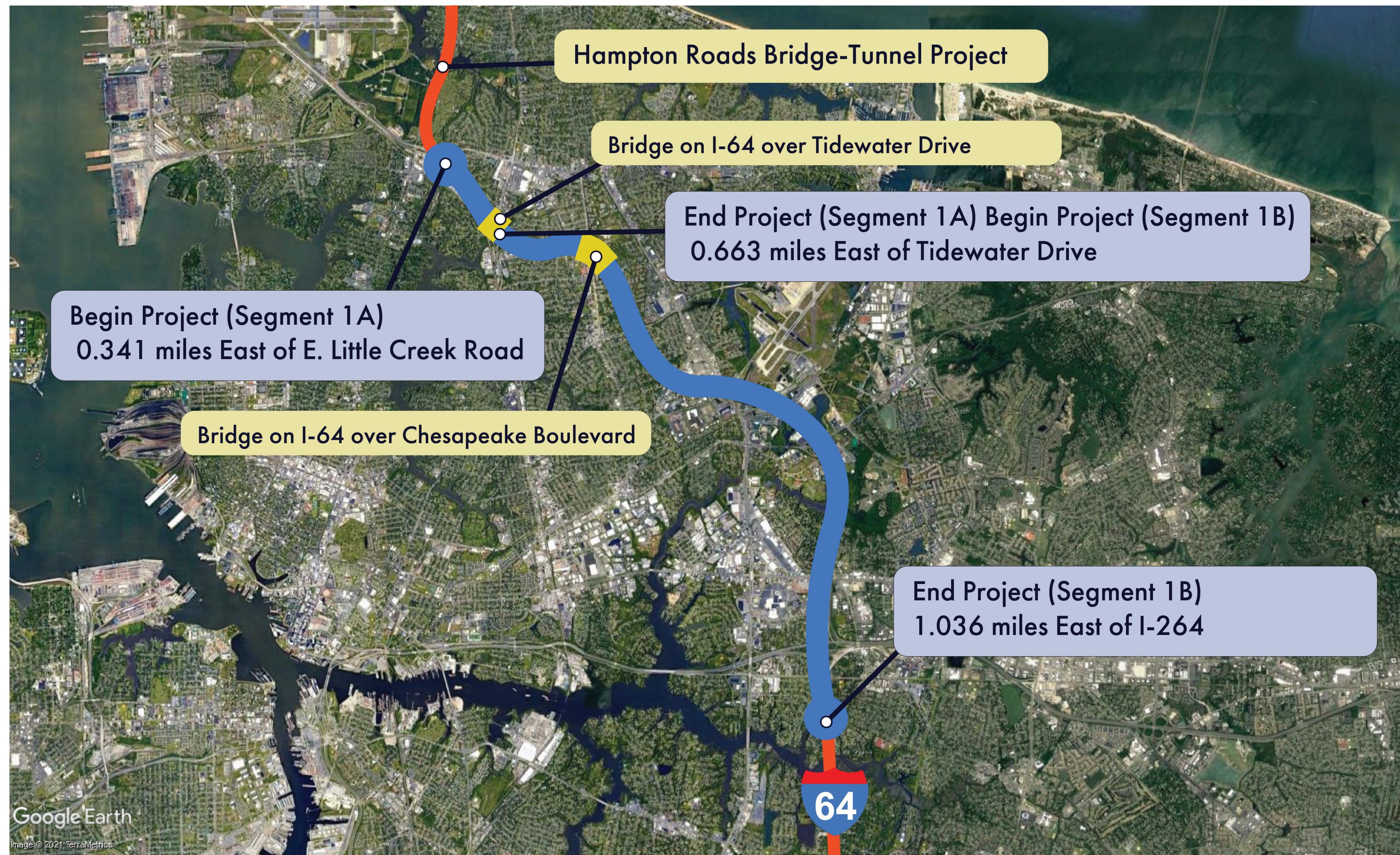
Project Overview - Norfolk Segment (1A/1B)

I-64 HREL Segment 1A/1B

UPC 117840/119637; State Project # 0064-122-470

From: 0.150 miles east of Patrol Road - Norfolk, VA

To: 1.036 miles east of I-264 - Norfolk, VA



Purpose: Provide a safe and more reliable travel option for motorists across the region and relieve congestion at key locations along Interstate 64

Improvements: From Patrol Road in Norfolk to the I-264 interchange, the three existing general purpose lanes and shoulders will be converted to one part time, high-occupancy express shoulder lane and three general purpose lanes in both directions.

SEGMENT 1A

Estimated Cost: \$48 million

From: 0.341 miles east of E. Little Creek Road

To: 0.663 miles east of Tidewater Drive

SEGMENT 1B

Estimated Cost: \$213 million

From: 0.663 miles east of Tidewater Drive

To: 1.036 miles east of I-264

Total Length: 9 miles

